

DAILY REPORT #07 – DORIS NORTH INFRASTRUCTURE/ NORTH DAM

Prepared by:	John Kurylo/ Lowell Wade	Date:	2012.01.12
Reviewed by:		Project #:	1CH008.058.0320
Role	Company	Personnel – Position	On Site
Client	Hope Bay Mining Limited (HBML)	Angela Holzapfel – ESR Compliance Manager David Vokey – ESR Coordinator Don Ethelston – HSLP Advisor Dean Wold - Safety Jill Turk – ESR Coordinator Katsky Venter – ESR Manger Michelle Tanquay – ESR Site Manager Stirling Kelly – HSLP Advisor	Out In No Out No Out In Yes
	JDS	Lloyd Jackson – Mechanical Superintendent Sven Archimowtiz – Electrical Superintendent Doug Fielding – Construction Manager Ishan Fechter – Construction Coordinator Jerry Graham – Construction Manager Kevin Whieldon – Project Coordinator Mark Valeriote – Construction Manager	Yes Yes No In Yes Out Out
Engineering Design Consultants	SRK Consulting (Canada) Inc.	John Kurylo – Site Engineer Megan Miller – Site Engineer Lawrence Borowski – Site Engineer Murry McGregor – Site Engineer Lowell Wade – Senior Engineer	In No No No Out
	EBA Engineering Consultants Ltd.	Jeff Orr – Project Manager Jennifer Stirling – Geologist John Jaramillo – Eng. Technologist Thomas Bradshaw – Junior Engineer	In No No No
Earthworks Contractor	Nuna Logistics	Bradford Watkin – QC Manager Dale Craig – Safety Don Webber – Foreman Doug Haverland – Area Superintendent Gary Sodhi – Field Engineer Georges Cornelissen – Survey Manager Jeff Roberts - Surveyor Jim Cardinal – Foreman Kevin Oakes – Project Engineer Kevin Kozdrowski – Foreman Margret Caley – Surveyor Matt McKay – Civil Supervisor Mike MacMaster – Surveyor Mike Price – Field Engineer Nick Stoneberger – Superintendent Rick Peters – Foreman Ron MacMaster – Surveyor Simon Chipper – Civil Supervisor	In Out No No In Out In No Yes Yes No No Yes Out Yes Yes Yes Yes
External Distribution List:	SRK: Seema Kang, Lowell Wade, Maritz Rykaart EBA: Nigel Goldup Nuna: Chris Petrovic JDS: Bob Prince-Wright HBML: Dave Power, Gerry Benson		
This Construction Daily Report is produced as an internal communication document between SRK site and head office staff. Any distribution of this report outside of SRK is done as a courtesy, and the information contained in this report are for information only to those external parties.			

WEATHER (ROBERTS BAY)

<http://www.wunderground.com/weatherstation/WXDailyHistory.asp?ID=INUNAVUT3>

Temperature/Wind Chill (°C)	6AM:-27.2	12PM:-27.2	6 PM :-28.9/-35.6	12 AM:-30.4/-39.4
Precipitation (mm)	Rain: None		Snow: None	
Conditions	Day Shift: Clear, light to no wind		Night Shift: Clear, moderate wind	
Daily norms (°C)	24 hour high: -26.7		24 hour low: -30.4	

HEALTH, SAFETY AND ENVIRONMENT

- No incidents were reported
- SRK and EBA attended the afternoon Hope Bay project orientation/ refresher course training.

COMMENTS, CORRESPONDENCE AND ACTIVITIES**DAILY MEETING WITH NUNA AND HBML TEAM:**

- The daily meet was attended by ADCO, ACI, Williams Wireless, Nuna [Nick Stoneberger, Simon Chipper, Kevin Oakes], ESR [Katsky Venter, Angela Holzapfel], Newmont Safety [Dean Wold], JDS [Jerry Graham, Mark Valeriotte, Lloyd Jackson, Kevin Whieldon], SRK [Lowell Wade].

Topic	Status
General	<ul style="list-style-type: none"> • No incidents to report. • The fire extinguishers in the Power House need to be checked.
Health and Safety and Environment	<ul style="list-style-type: none"> • Only clean wood is allowed to be placed in the incinerator. • Wildlife has the right-of-way – a fox almost got run over by a vehicle. • The air quality model is being updated, please provide all locations for emission stacks and note when they are/were in operation
North Dam	<ul style="list-style-type: none"> • No issues with removal and placing of material • Nuna continues at the North Dam to remove ROQ cover. • FCP needs the burner to be fixed [the jets need to be cleaned]. • The start of placing frozen core material is expected to be Saturday. • Additional cleaning of the key trench is planned for today.
Water Management Structures	<ul style="list-style-type: none"> • SRK is currently working on updating the Doris North Water Diversion Berm IFC drawing package with the new original ground survey in underway • Nuna and JDS will meet to discuss the work plans for the diversion berm and sump
General	<ul style="list-style-type: none"> • The Backup power in the main office needs to be addressed • Jim Spenceley will be on-site January 18th for a town hall meeting to discuss the Board of Directors discussions regarding Hope Bay.

SURVEY:

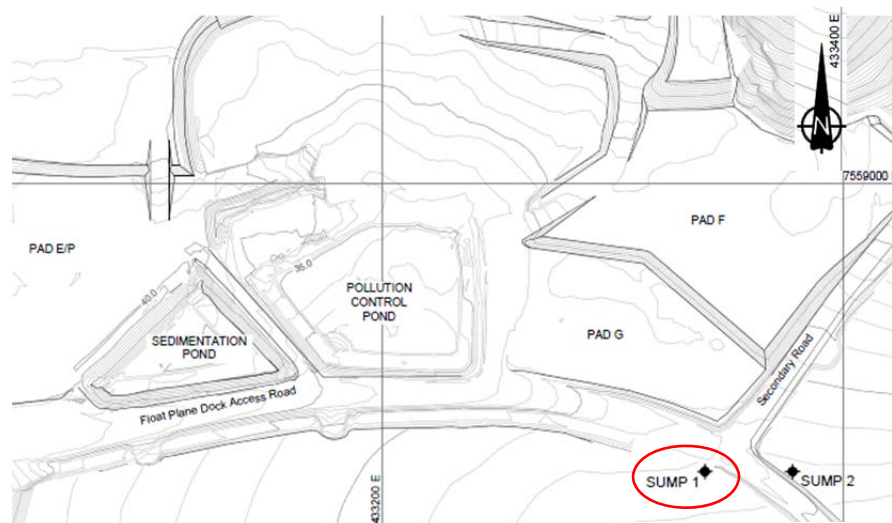
Required	•
Data Received	•
Outstanding	•
Upcoming	• Survey of frozen core surface after cleaning/ scraping activities at N. Dam

NORTH DAM/FROZEN CORE PLANT PAD:

- An excavator was used to remove snow around the FCP Plant Pad and North Dam area.
- Two excavators were used during the day and night shift to remove frozen 5/8" clear material from the key trench footprint. Primarily the central area and the side slopes of the key trench were worked on.
- Survey marked out the grade (for material removal) to the frozen core material (i.e. frozen core material placed in 2011).
- The frozen material around cable ND-HTS-060-28.8 continues to be hoarded. Hoarding is being completed so the frozen core material around the cable can be removed and access to the end of the cable, still in the ground, will be achieved for splicing.
- An excavator was used to dig into the frozen core material stockpile at the FCP pad. A section of the outer frozen crust was peeled back by the excavator. Notable chunks of frozen material were observed on the outside of the frozen core stockpile.
- The FCP burner and fuel injectors were worked on by the day and night shift crews.

GENERAL:

- Snow removal on the Float Plan Dock Access road resulted on dayshift.
- SRK held a discussion with Nuna about the location of the Doris North Camp sumps. Nuna indicated that Sump 1, located SSE of the Pad G (see below), is surveyed in as being on the side of the expanded Float Plan Dock Access Road. SRK and Nuna survey will visit the sump location in question on January 13th to devise a solution.



Sump location in question

PHOTOS:

Photo 1: Excavators working on removing frozen 5/8" clear material in North Dam Key Trench, ~ WNW view.



Photo 2: Excavators working on removing frozen 5/8" material in Key Trench, ~ SSW close-up view.

